

SLPPU5e1U24F

Patch Panel Category 5e UTP 1U-24-Port Loaded

General standards

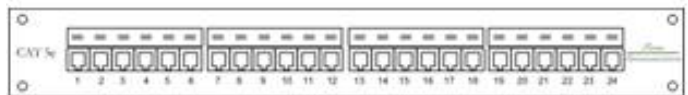
- International standard: ISO/IEC 11801 2nd edition (2002) and ISO/IEC 11801 Amendment 2 (2010)
- European standard: EN 50173-1 (2002) and EN 50173-1 Amendment 1 (2009)
- U.S. Standard: ANSI/TIA/EIA 568-B.2-10 (2008)

Description

- Cat5e Patch Panel, 24-Port, 1U, Black Loaded

Physical dimensions

- 1- Materials**
Steel Panel
- 2- Access**
Front Connection: Flush
Termination Area: Rear
- 3- Capacity**
24 connectors (Patch Panel is already loaded)
- 4- Dimensions**
Height: 1.750 in.
Width: 19.000 in.
Depth: 1.500 in.
- 5- Weight**
0.543 kgm.
- 6- Color**
Black
- 7- Termination area**
Indoor
- 8- Packaging**
Individually packaged in a cardboard box.



Electrical characteristics

Frequency (MHz)	Max. Insertion Loss TIA* (dB)	Max. Insertion Loss Fumo** (dB)	Min. NEXT TIA* (dB)	Min NEXT Fumo** (dB)	Min FEXT TIA* (dB)	Min FEXT Fumo* (dB)	Min. Return Loss TIA* (dB)	Min. Return Loss Fumo** (dB)
1.000	0.100	0.100	65.000	77.000	65.000	67.000	30.000	32.000
4.000	0.100	0.100	65.000	73.000	63.100	65.000	30.000	32.000
8.000	0.100	0.100	64.900	66.900	57.000	58.900	30.000	32.000
10.000	0.100	0.100	63.000	65.000	55.100	57.000	30.000	32.000
16.000	0.100	0.100	58.900	60.900	51.000	52.900	30.000	32.000
20.000	0.100	0.100	57.000	59.000	49.100	51.000	30.000	32.000
25.000	0.100	0.100	55.000	57.000	47.100	49.000	30.000	32.000
31.250	0.110	0.100	53.100	55.100	45.200	47.100	30.000	32.000
62.500	0.160	0.120	47.100	49.100	39.200	41.100	24.100	32.000
100.000	0.200	0.160	43.000	45.000	35.100	37.000	20.000	28.000
160.000		0.210		40.900		32.900		23.900

Specifications

Dielectric Strength	1,000 V RMS @ 60Hz for 1 minute
Current Rating	1.500 A
Insulation Resistance	500 M-ohm Minimum
Max. Contact Resistance	20m-ohm
Termination Resistance	2.5 m-ohm

Mechanical Characteristics

Specifications

Footprint/Type	HDPP
Plug / Jack Compatibility	RJ45
Termination Interface (Connection): Front mated Connection	750 Cycles
Termination Interface (Connection): Rear IDC Connection	10 Insertions
Termination Characteristic	Universal T568A/B
Storage Temperature Range	-40°C To +70°C
Installation Temperature Range	-10°C To +60°C
Operation Temperature Range	-10°C To +60°C
Tool Compatibility	BIX Connecting Tool (A0270165)

Product Family

Item Number	Description
SLPPU5e1U24F	Cat5e Patch Panel, 24-Port, 1U, Black Loaded
SLPPU5e2U48F	Cat5e Patch Panel, 48-Port, 2U, Black Loaded
SLPPU5e2U72F	Cat5e Patch Panel, 72-Port, 2U, Black Loaded

The information contained within this document must not be copied, reprinted or reproduced in any form. Either wholly or in part, without the written consents of Fumo. The information is believed correct at the time of issue. Fumo reserves the right to amend this specification without notice. Specification is not contractually valid unless specifically authorized by Fumo.

