

SLPPU61U24F

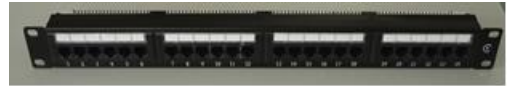
Patch Panel Category 6 UTP 1U-24-Port Loaded

General standards

- International standard: ISO/IEC 11801 2nd edition (2002) and ISO/IEC 11801 Amendment 2 (2010)
- European standard: EN 50173-1 (2002) and EN 50173-1 Amendment 1 (2009)
- U.S. Standard: ANSI/TIA/EIA 568-B.2-10 (2008)

Description

- Cat6 Patch Panel, 24-Port, 1U, Black Loaded



Physical dimensions

1- Materials

Steel Panel

2- Access

Front Connection: Flush

Termination Area: Rear

3- Capacity

24 connectors (Patch Panel is already loaded)

4- Dimensions

Height: 1.750 in.

Width: 19.000 in.

Depth: 1.300 in.

5- Weight

1.350 lbs.

6- Color

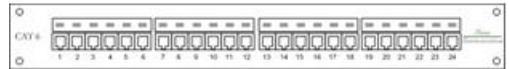
Black

7- Termination area

Indoor

8- Packaging

Individually packaged in a cardboard box.



Electrical characteristics

Frequency (MHz)	Max. Insertion Loss TIA* (dB)	Max. Insertion Loss Fumo** (dB)	Min. NEXT TIA* (dB)	Min NEXT Fumo** (dB)	Min FEXT TIA* (dB)	Min FEXT Fumo* (dB)
1.000	0.100	0.100	75.000	77.000	75.000	77.000
4.000	0.100	0.100	75.000	77.000	71.100	75.100
8.000	0.100	0.100	75.000	77.000	65.000	69.100
10.000	0.100	0.100	74.000	77.000	63.100	67.100
16.000	0.100	0.100	69.900	72.900	59.000	63.000
20.000	0.100	0.100	68.000	71.000	57.100	61.100
25.000	0.100	0.100	66.000	69.000	55.100	59.100
31.250	0.110	0.100	64.100	67.100	53.200	57.200
62.500	0.160	0.120	58.100	61.100	47.200	51.200
100.000	0.200	0.160	54.000	57.000	43.100	47.100
200.000	0.280	0.240	48.000	51.000	37.100	41.100
250.000	0.320	0.280	46.000	49.000	35.100	39.100
300.000		0.310		44.500		37.600

Mechanical Characteristics (Connectivity)

	Specifications
Footprint/Type	KeyConnect
Plug / Jack Compatibility	RJ45
Termination Interface (Connection): Front mated Connection	750 Cycles
Termination Interface (Connection): Rear mated Connection	20 Cycles
Cable/Connector Retention	15 lbs.
Connector/Hardware Retention	20 lbs.
Plug/Connector Retention	11.250 lbs.
Storage Temperature Range	-40°C To +70°C
Installation Temperature Range	-10°C To +60°C
Operation Temperature Range	-10°C To +60°C
Tool Compatibility	REVConnect Termination Tool (RVUTT01)

Product Family

Item Number	Description
SLPPU61U24F	Cat6 Patch Panel, 24-Port, 1U, Black Loaded
SLPPU62U48F	Cat6 Patch Panel, 24-Port, 2U, Black Loaded
SLPPU62U72F	Cat6 Patch Panel, 24-Port, 2U, Black Loaded

The information contained within this document must not be copied, reprinted or reproduced in any form. Either wholly or in part, without the written consents of Fumo. The information is believed correct at the time of issue. Fumo reserves the right to amend this specification without notice. Specification is not contractually valid unless specifically authorized by Fumo.

